

TUNUM ACHIGAASINGIN

Alqutaâ Maduukalix Inga?
Alqutaâ Malix Ingaya?

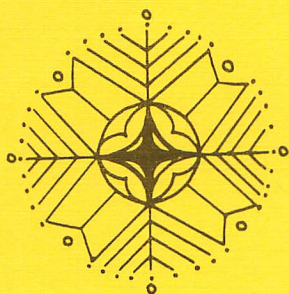


Eastern Aleut

T U N U M A C H I G A A S I N G I N

Alquta^â Maduukalix Inga?

Alquta^â Malix Ingaya?



Developed by the Staff of the
National Bilingual Materials
Development Center
Rural Education Affairs
University of Alaska
2223 Spenard Road
Anchorage, Alaska 99503

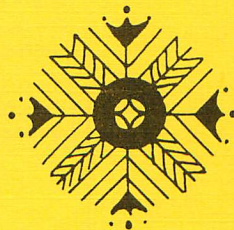


Prepared in Eastern Aleut by
Olga Mensoff

Illustrated by
J. Leslie Boffa

This work in its present form is
reproduced for field testing. All
rights are reserved.

8/77/75



"The project reported herein was performed pursuant to a grant from the U.S. Office of Education, Department of Health, Education and Welfare. However, the opinions expressed herein do not necessarily reflect the positions or policies of the U.S. Office of Education, and no official endorsement by the U.S. Office of Education should be inferred."

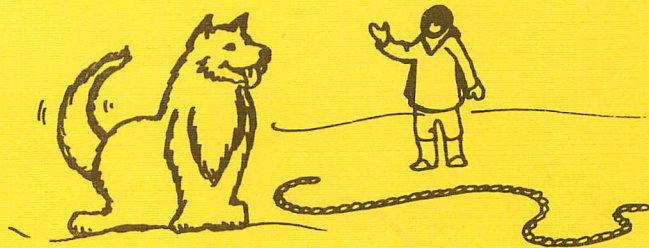
This material was developed and reproduced with funds provided by Grant G007605457, Title VII ESEA. It has been reproduced in this form for field testing. All rights are reserved.



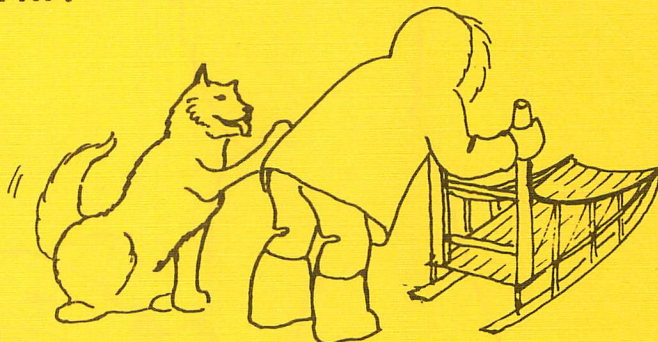
Wan waya Ivaan.

Wan waya saaglaâ.

Ivaan alqutan maduukalix?



Saagla^â qisaduukalix?



Alix saagla^â tmi^âduukalix ii?



Alix saagla^â asix mikaduukalix ii?



Alix saagla^â achxuduukalix ii?



Ivaan alqutan maduukalix?

Saagla[^]x qisasix ii?

Saagla[^]x tmi[^]xsix ii?

Saagla[^]x asix mikalix?

Saagla[^]x achxuduukalix?

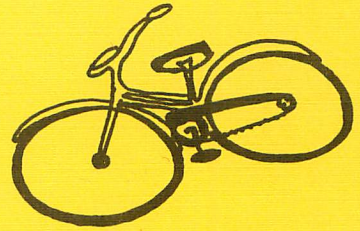
Saagla[^]x achxuku[^]x inga.



Wan waya Adaada^â.

Wayay^âasim kulis^âii.

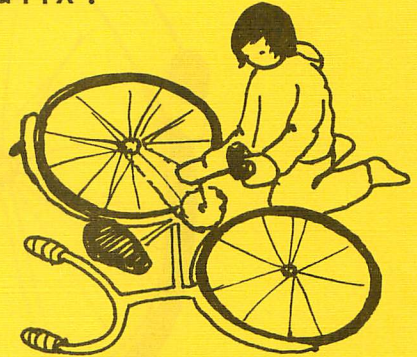
Adaada^â alquta^â maduukalix?



Ay^haasim kulis^hii sig^hiduukalix?



Ay^haasim kulis^hii atxa^hduukalix?



Ay^haasim kulis^hii
chaduduukalix?



Ay^haasim kulis^hii
ay^haasduukalix?



Adaada^â alquta^â malix?

Ay^âaa^âsim kulis^âii sig^âilix?

Ay^âaa^âsim kulis^âii atxa^âsix?

Ay^âaa^âsim kulis^âii chadulix?

Ay^âaa^âsim kulis^âii ay^âaa^âsalix ii?

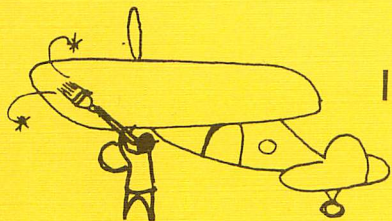
Ay^âaa^âsim kulis^âii ay^âaa^âsaku^â.



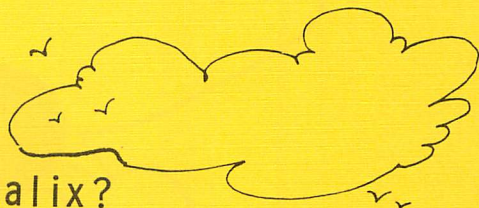
Wan waya Taniila^â.

Wan waya iga^âtaasi^â.

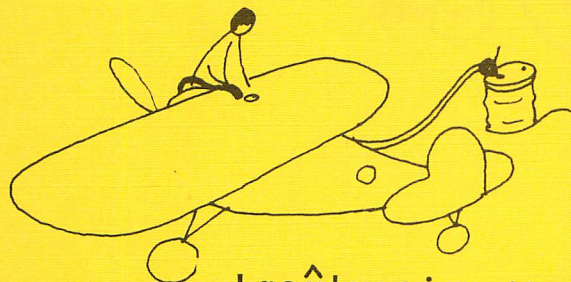
Taniila^â alquta^â maduukalix?



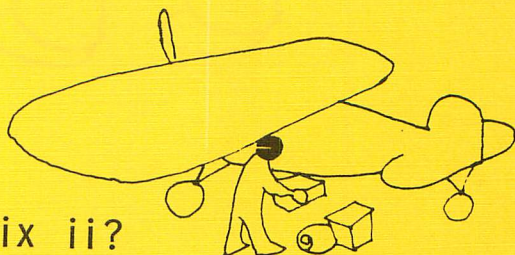
Iga^htaasi^h aamilduukalix?



Iga^htaasi^h iga^htaasduukalix?



Iga^htaasim ilan gaasalina^h a^hgduukalix?



Iga^htaasi^h usiduukalix ii?



Taniila^â alquta^â malix?

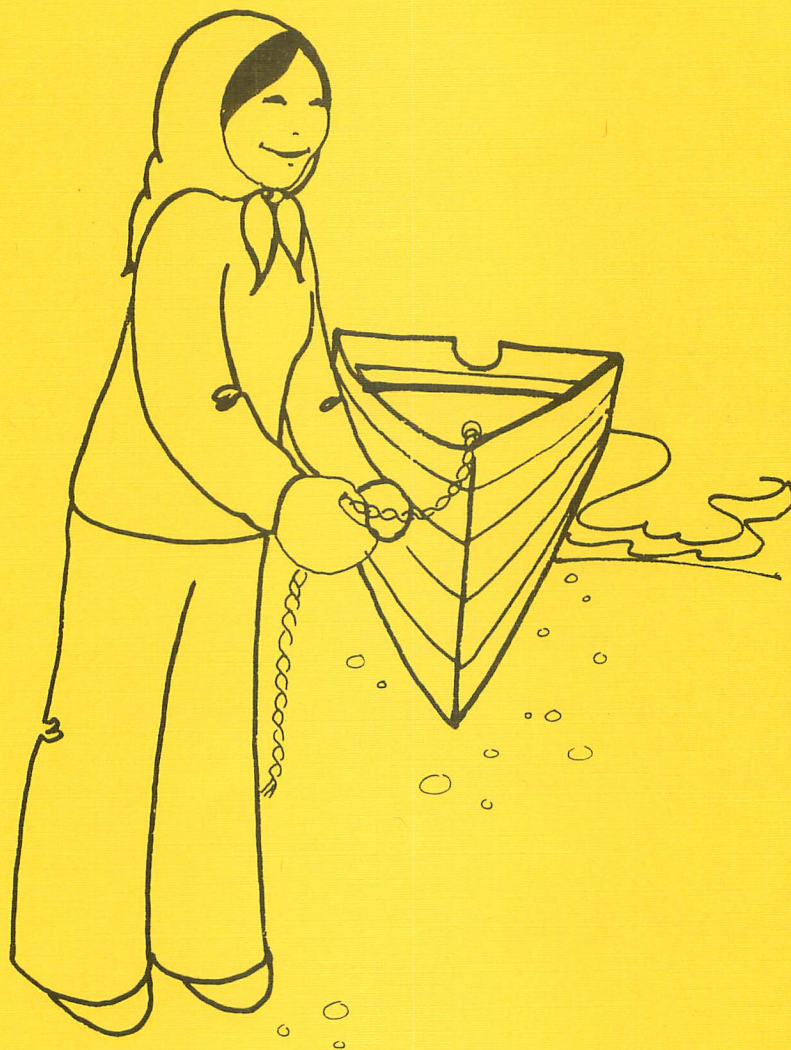
Iga^âtaasi^â amalilix ii?

Iga^âtaasix iga^âtaasalix?

Iga^âtaasim ilan gaasalina^â a^âsix ii?

Iga^âtaasi^â usilix?

Iga^âtaasi^â usiku^â.



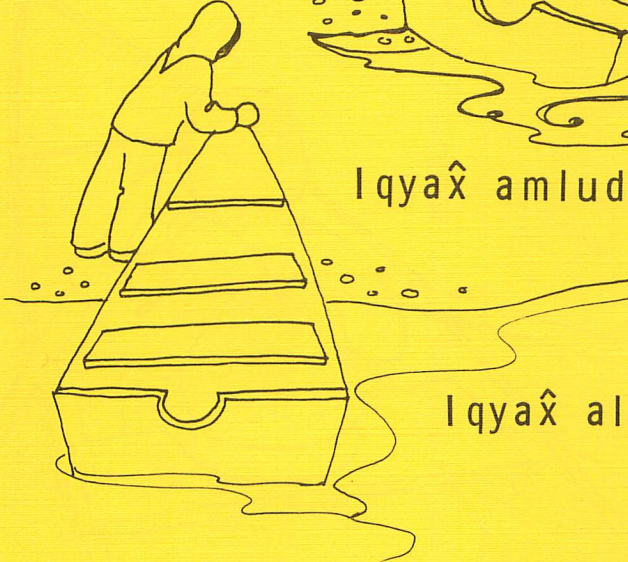
Wan waya Anaadaâ.

Wan waya iqyaâ.

Anaadaâ alqutaâ maduukalix?



Iqyaâ amluduukalix?



Iqyaâ alağum achidan
ağduukalix?



Iqyaâ yakarağiduukalix?



Alix iqyaâ sayuduukalix?



Anaadaâ alqutaâ malix?

Iqyaâ amlulix ii?

Iqyaâ alaâum achidan aâsix?

Iqyaâ yakaraâgilix?

Iqyaâ sayulix ii?

Anaadaâ iqyaâ sayukuâ.

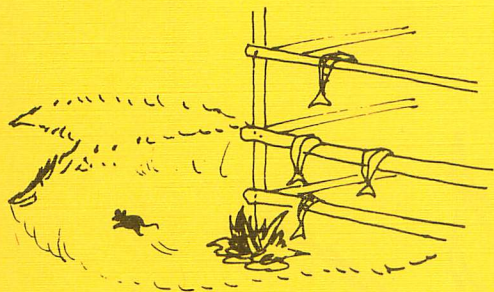
Wan waya asxukida.1.

Wayu udx.

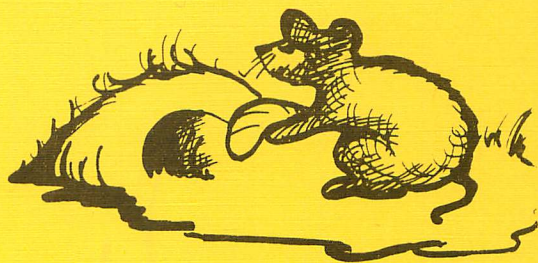
Asxukida alquta maduukalix?



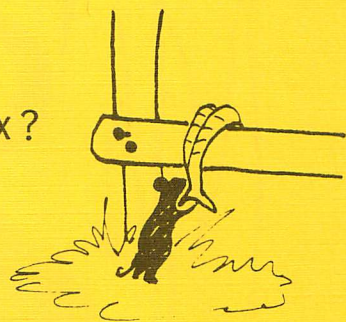
Uda^â taxsaduukalix?



Qa^â a^âgisduukalix ii?



Qa^â umsixduukalix?



Qa^â qaduukalix?





As^hukida^h alquta^h malix?

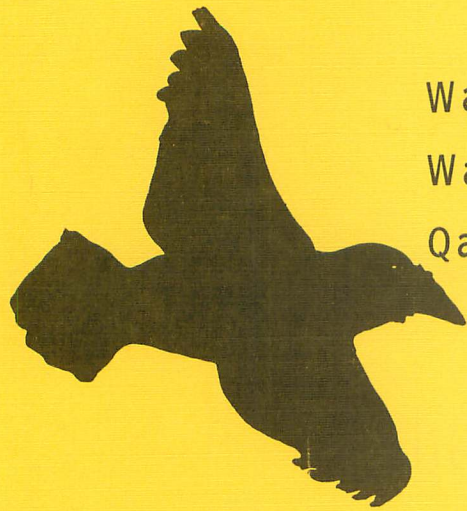
Qam qakaa taxsalix?

Qam qakaa a^hgiisalix?

Qam qakaa umsixsix?

Qam qakaa qalix ii?

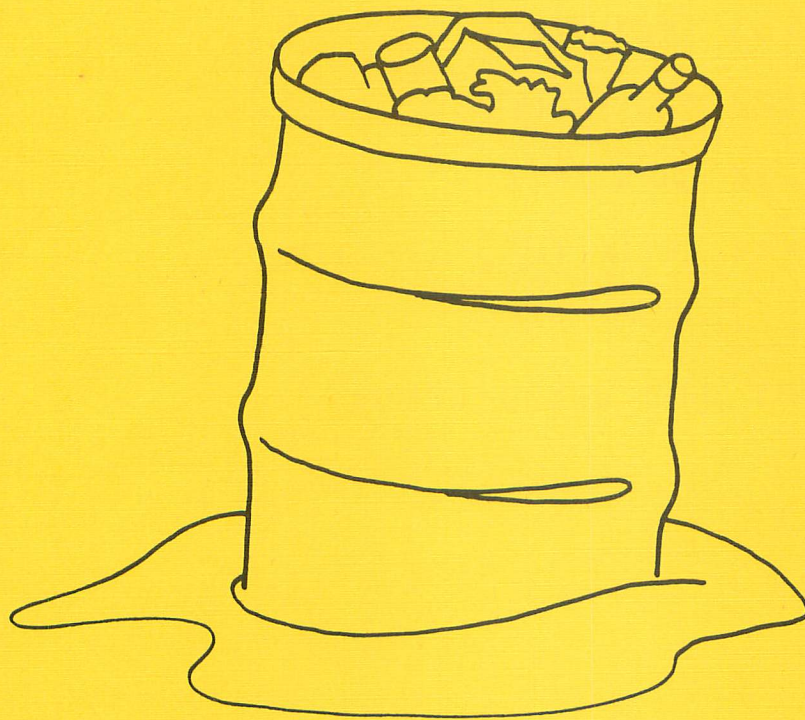
As^hukida^h qam qakaa qaku^h.



Wan waya qalngaa^â.

Waya kaxiilu^â.

Qalngaa^â alquta^â maduukalix?



Kaxiilu^â uku^âtaduukalix?



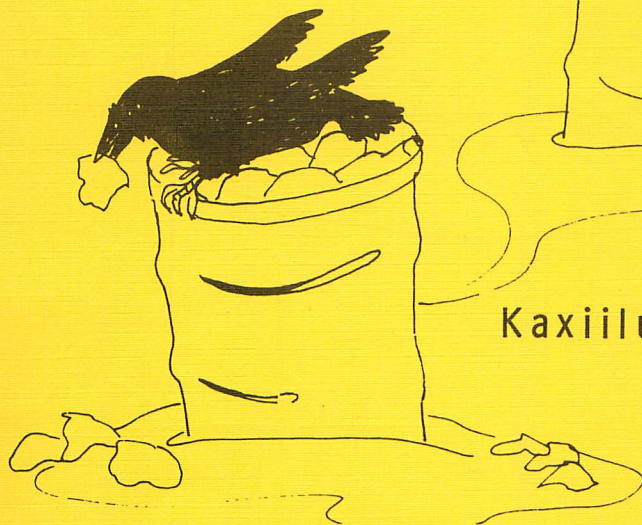
Kaxiilu^âgim kugan nagn
aygagduukalix?



Kaxiilu^â qaduukalix?



Kaxiilu^â chisiduukalix?





Qalngaa^â alquta^â malix?

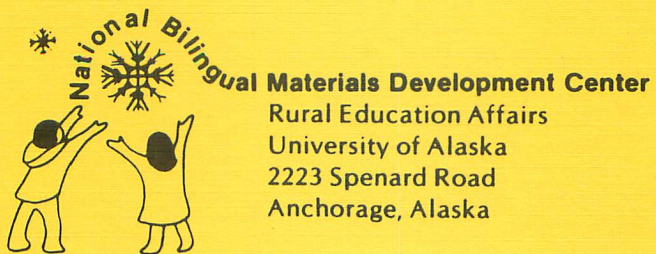
Kaxiilu^â uku^âtaasalix ii?

Kaxiilu^âgim kugan aygagduukalix?

Kaxiilu^â chisilix ii?

Qalngaa^â kaxiilu^â qalix?

Kaxiilu^â chisiku^â.



Rural Education Affairs
University of Alaska
2223 Spenard Road
Anchorage, Alaska